

Sony NXCAM Product Workflows

in

Adobe Premiere Pro CS4

## Table of Contents

<b>INTRODUCTION .....</b>	<b>1</b>
<b>HXR-NX5E and the NXCAM Product Line .....</b>	<b>1</b>
<b>Flexible Selection of Recording Media .....</b>	<b>1</b>
<b>Dual Memory Card Slots.....</b>	<b>1</b>
<b>HYBRID Recording with the Sony HXR-FMU128.....</b>	<b>2</b>
<b>Flexible Recording Format Selection .....</b>	<b>3</b>
<b>Recording Time .....</b>	<b>5</b>
<b>NXCAM Folder Structure and File Names.....</b>	<b>5</b>
<b>WORKFLOW OVERVIEW.....</b>	<b>7</b>
<b>Using the Sony Content Management Utility.....</b>	<b>7</b>
<b>Content Management Utility Overview.....</b>	<b>8</b>
<b>Transferring NXCAM Media to a Local HDD via the CMU .....</b>	<b>9</b>
<b>Registering Existing NXCAM Media in the CMU .....</b>	<b>10</b>
<b>Archiving Original NXCAM Media.....</b>	<b>11</b>
<b>Archiving Example.....</b>	<b>11</b>
<b>Importing Clips From Archived Folders .....</b>	<b>12</b>
<b>KEY WORKFLOW FEATURES IN PREMIERE PRO CS4 .....</b>	<b>14</b>
<b>Supported NXCAM Recording Modes .....</b>	<b>14</b>
<b>System Requirements .....</b>	<b>14</b>
<b>Connections .....</b>	<b>14</b>
<b>Creating a Premiere Pro Project .....</b>	<b>15</b>
<b>Importing NXCAM Media Files .....</b>	<b>17</b>
<b>Import Menu.....</b>	<b>17</b>
<b>Media Browser.....</b>	<b>17</b>
<b>Adding Clips to the Timeline.....</b>	<b>18</b>
<b>PROJECT OUTPUT .....</b>	<b>19</b>
<b>Blu-ray Disc .....</b>	<b>20</b>
<b>High Quality Movie File.....</b>	<b>21</b>
<b>HDV Video Tape .....</b>	<b>23</b>
<b>Output to an HD Recorder via HD-SDI .....</b>	<b>24</b>
<b>NOTES.....</b>	<b>25</b>

## INTRODUCTION

The HXR-NX5E is Sony's first NXCAM branded camcorder. This document explains how to edit video recorded by this camcorder using Adobe Premiere CS4.

### *HXR-NX5E and the NXCAM Product Line*

NXCAM is Sony's newest product line designed for professionals. NXCAM provides powerful features for professional video production, such as HD-SDI output, flexible media selection, and stunning AVCHD picture quality.

The HXR-NX5E camcorder incorporates cutting-edge technologies, such as G Lens, an Exmor™ CMOS sensor, built-in GPS receiver, and a new Active SteadyShot® mode.

### *Flexible Selection of Recording Media*

Various recording media are available in the HXR-NX5E:

- ◆ Memory Stick PRO Duo (Mark2)™ media, Memory Stick PRO-HG Duo™ media, Memory Stick PRO-HG Duo HX™ media\*
- ◆ SD/SDHC Memory Card\*\*
- ◆ Flash Memory Unit (Sony HXR-FMU128)

\*Compatible "Memory Stick" type: For AVCHD recording / Capacity: more than 1GB, for standard definition recording / Capacity: more than 512MB

\*\*Recommended Speed Class For AVCHD recording / Class 4 or higher, For standard definition recording / Class 2 or higher)

### *Dual Memory Card Slots*

The HXR-NX5E has two memory card media slots for recording. Use of Sony's Memory Stick PRO Duo™ and Memory Stick PRO Duo HG™ are recommended media cards.

The HXR-NX5E records to a single memory card slot at a time. With two memory cards installed, the camcorder provides continuous, seamless recording of long scenes, and maximises the utilisation of each card's storage capacity.

As the card in Slot A reaches its capacity, recording is automatically switched to the card in Slot B. The card in Slot A may then be removed and replaced. When the card in Slot B fills to capacity, another seamless switch back to Slot A occurs.

This unique dual slot configuration provides continuous recording without any breaks in content or time code.

Prior to editing, clips that span one or more memory cards may be merged using the Sony Content Management Utility (CMU), a software accessory supplied with the camcorder.

## ***HYBRID Recording with the Sony HXR-FMU128***

The Sony HXR-FMU128, an optional flash memory recording unit specially designed for the HXR-NX5E, mounts to the camcorder without the need for any external cabling. Built around a 128 GB solid state flash memory drive, the HXR-FMU128 offers significantly longer recording time than a single memory card.

When the HXR-FMU128 is used in conjunction with memory cards, Sony's unique HYBRID recording capability is enabled, allowing a combination of HD and SD resolutions to be recorded simultaneously. The operator is free to choose which resolution is recorded on each media type, and may even set the camcorder to record to both media types simultaneously.

There are many benefits to HYBRID recording, including:

- ◆ Edit system ingest time for HD files stored on the HXR-FMU128 is typically faster than from memory cards.
- ◆ HD files simultaneously recorded on memory cards provide a time and cost-effective method of archiving.
- ◆ SD files may be used for quick preview on a laptop or for SD deliverables, such as web-based movies.

***NOTE: Recording SD simultaneously to both media types is not supported.***

***IMPORTANT: The filenames of corresponding HD and SD clips are different.***

## ***Flexible Recording Format Selection***

### **HD (AVCHD)**

#### ***Video Compression***

- ◆ **FX mode** (1920x1080 or 1280x720, 21 Mbps\*)
- ◆ **FH mode** (1920x1080 or 1280x720, 16 Mbps)
- ◆ **HQ mode** (1440x1080 or 1280x720, 9 Mbps)
- ◆ **LP mode** (1440x1080 or 1280x720, 5 Mbps)

\*Including audio and ancillary data the total data rate is 24Mbps

#### ***Frame Rate, 50i models***

- ◆ 1080/50i
- ◆ 1080/25p
- ◆ 720/50p

#### ***Frame Rate, 60i models***

- ◆ 1080/60i (59.94i)
- ◆ 1080/30p (29.97p)
- ◆ 1080/24p (23.98p)
- ◆ 720/60p (59.94p)
- ◆

#### ***Audio***

- ◆ Linear PCM (uncompressed)
- ◆ AC-3 (compressed)

### **SD (MPEG2)**

#### ***Video Compression***

- ◆ MPEG2 Program Stream, approx. 9Mbps
- ◆ PAL (720x576) or NTSC (720x480)
- ◆ 4:3 or 16:9 selectable

#### ***Frame Rate, 50i models***

- ◆ 576/50i
- ◆ 576/25p scan: 25p scanned image is recorded as 50i

#### ***Frame Rate, 60i models***

- ◆ 480/60i (59.94i)

## Sony NXCAM Workflows in Adobe Premiere Pro CS4

- ◆ 480/30p scan: 30p scanned image is recorded as 60i
- ◆ 480/24p scan: 24p scanned image is recorded as 60i with 2-3 pulldown.

### **Audio**

- ◆ AC-3 only

## Recording Time

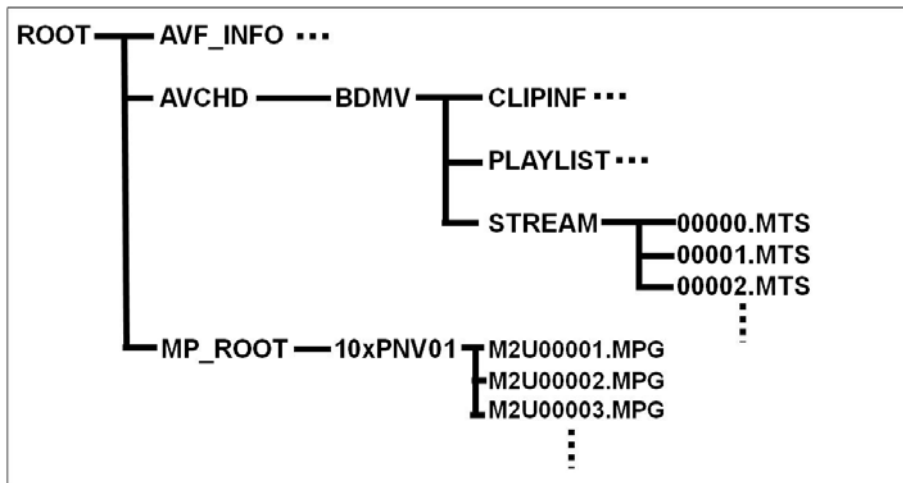
Refer to the charts below to determine the approximate maximum recording time for each media type and quality setting.

HD MOVIE w/Linear PCM 2ch	AVCHD (FX)	AVCHD (FH)	AVCHD (HQ)	AVCHD (LP)
8GB Memory Stick PRO Duo media	40 min	55 min	95 min	150 min
16GB Memory Stick PRO Duo media	85 min	110 min	190 min	300 min
32GB Memory Stick PRO Duo media	170 min	225 min	385 min	605 min
HXR-FMU128 (128GB)	700 min	930 min	1570 min	2490 min

SD MOVIE w/Dolby Digital 2ch	MPEG2-SD 9M (HQ)
8GB Memory Stick PRO Duo media	115 min
16GB Memory Stick PRO Duo media	235 min
32GB Memory Stick PRO Duo media	475 min
HXR-FMU128 (128GB)	1960 min

## NXCAM Folder Structure and File Names

Below is a brief overview of the folder structure and file naming conventions recorded on memory cards or the optional HXR-FMU128 flash memory recorder.



.MTS file

This is the high quality AVCHD video stream data. During long recordings, the clip is automatically divided (spanned) into 2GB segments. Spanned files are seamlessly merged while transferring to a computer via the Sony Content Management Utility (CMU) for NXCAM.

### **.MPG file**

This is the SD quality MPEG2 file. During long recordings, the clip is automatically divided (spanned) into 2GB segments.

### **AVF\_INFO, MEMSICK.IND**

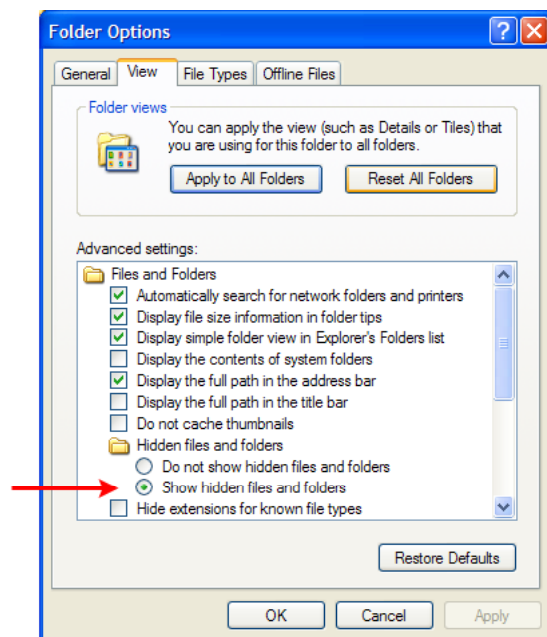
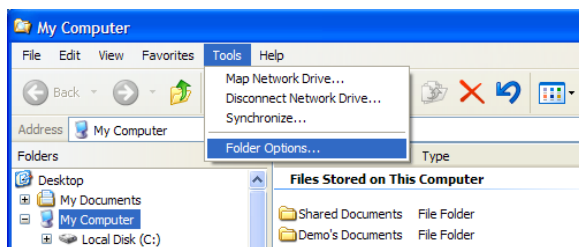
These folders/files are administrative in nature.

***IMPORTANT:*** Do not move or copy individual clips via Windows Explorer® or the Macintosh Finder, as this will result in unusable media on the target drive.

***For copying individual clips to hard disc, use the Sony Content Management Utility (CMU).***

***Windows Explorer or the Macintosh Finder may be used to do an archive of the entire contents of either a memory card or HXR-FMU128, as long as all ancillary and hidden files are included in the transfer.***

***When archiving on a Windows system (or a Windows boot on a Macintosh® computer), always select “Show hidden files and folders” in the Folder Options “View” tab, as shown below.***





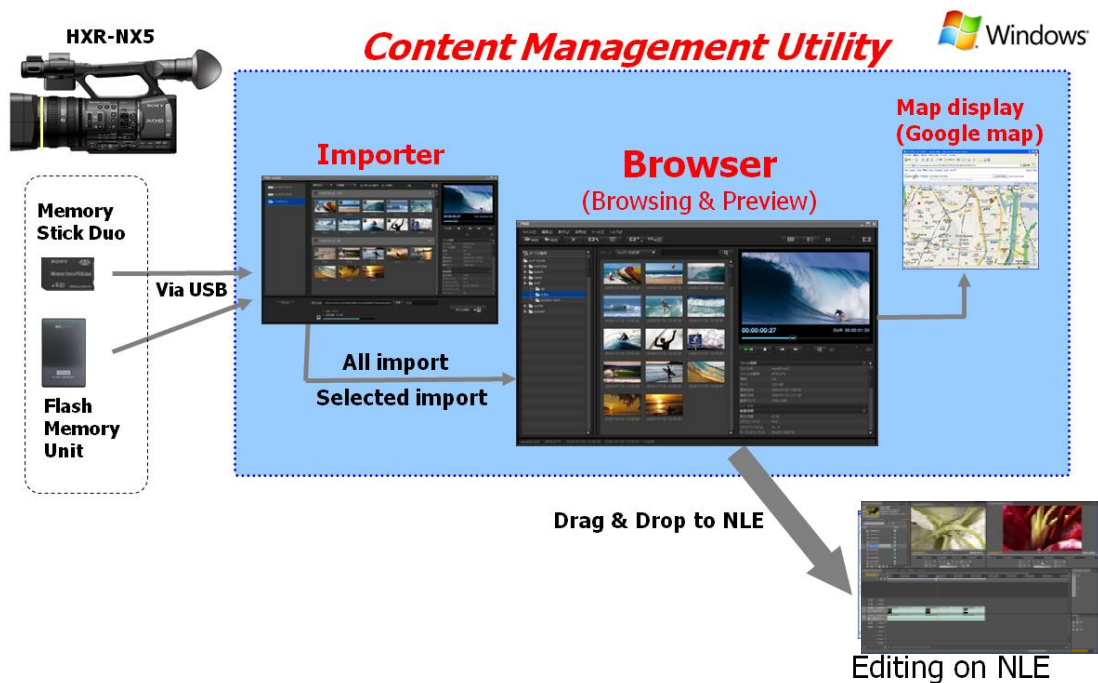
## WORKFLOW OVERVIEW

### *Using the Sony Content Management Utility*

The Sony HXR-NX5E includes the Sony Content Management Utility (CMU), a Windows-based software application for importing, previewing, and copying clips from NXCAM media.

A typical NXCAM/CMU workflow is as follows:

- 1 - Transfer clips from a memory card or HXR-FMU128 to local hard disc storage via the CMU.
- 2 - Use the CMU to browse and select the necessary clips.
- 3 - Import the selected clips to the NLE project bin.
- 4 - Begin editing.

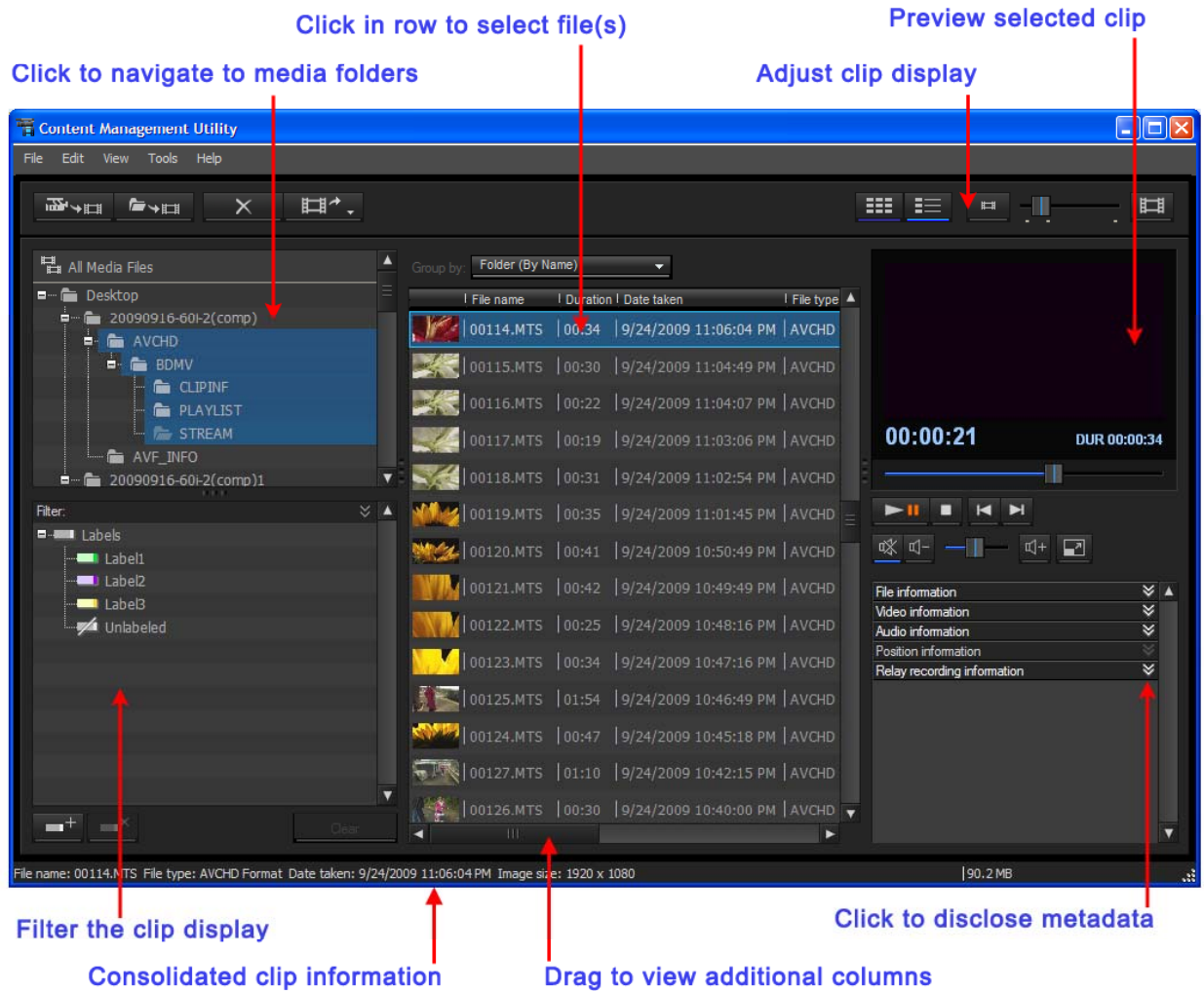


Note that the workflows outlined here represent just a few examples of how to work with the AVCHD format, and that workflows can vary based on the project and/or installation.

For more detailed information on any of the software or hardware mentioned in this document, please refer to the manufacturer-supplied Operations Guide for the associated product.

## Content Management Utility Overview

Below is a brief overview of the CMU Browser window.



Some of the key workflow features of the CMU are:

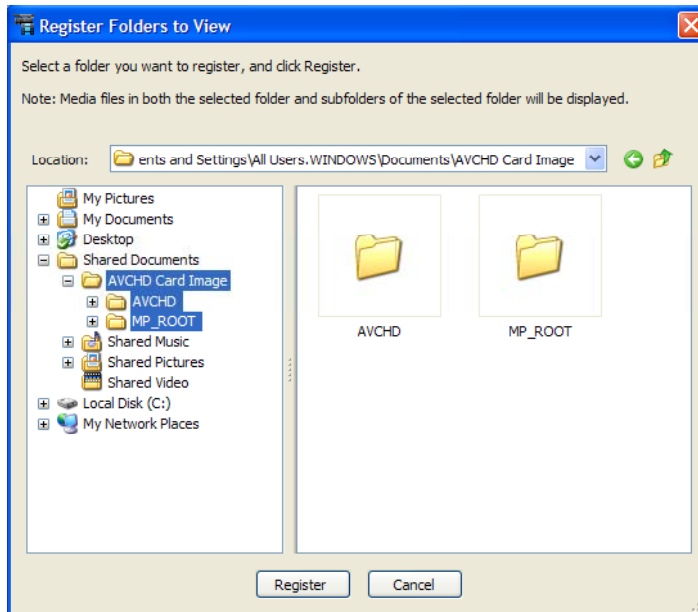
- ◆ Transferring of clips from memory card or HXR-FMU128 to local hard disc storage.
- ◆ Combining FAT32 spanned clips into one single file.
- ◆ Combining clips that span two or more memory cards.
- ◆ Registering of any folders on the local hard drive that contain AVCHD or MPEG-SD media files.
- ◆ Clip browsing.
- ◆ Browsing of media metadata, such as date, recording mode, and GPS data.
- ◆ Indication of shooting location on Google Maps™, using the embedded GPS data.



## Registering Existing NXCAM Media in the CMU

NXCAM video files contained on local hard disk storage must be registered in the CMU prior to browsing. To register a folder containing AVCHD media, do the following:

- 1 - Launch the CMU application.
- 2 - Click the **Register Folders to View** button, located at the top left of the CMU Browser window. The Register window will open.



- 3 - Navigate to the folder that you want to register.
- 4 - Click the **Register** button.

***IMPORTANT:*** The procedure above is only applicable to .MTS files previously stored to the computer hard drive(s).

## ***Archiving Original NXCAM Media***

In a typical workflow, the CMU is used to copy clip data from memory cards to a user-specified destination folder on a local hard drive. Spanned clips are automatically merged as part of this process. These transferred clips may then be imported to the NLE project.

As part of the transfer process from card to hard disc, the original folder structure and some metafiles created by the NXCAM camcorder are lost. Therefore, ***performing an archive of all camera-original material is highly recommended.***

**Copying individual clips via Windows Explorer or the Macintosh Finder will result in unusable media on the target drive. When archiving the contents of either a memory card or HXR-FMU128, always copy the entire contents of the volume, including all ancillary files.**

***IMPORTANT: When archiving on a Windows system (or on a Windows boot on a Macintosh computer), always select “show hidden files and folders” in the Windows folder options. Then copy all shown folder/files to a storage drive, maintaining the original folder structure.***

## ***Archiving Example***

When working with multiple memory cards and/or cameras, an organised archival workflow should be employed. Below is a typical workflow for archiving NXCAM media:

- 1** - After shooting with a memory card, provide a unique physical label, such as “091231-CAM1-1”, which is the date, camera number, and card number.
- 2** - Load the memory card in a card reader connected to your computer.
- 3** - When using the Windows OS, always choose the “Show hidden files and folders” option located in the Folder Options pane (*Start > Control Panel > Folder Options > View*).
- 4** - Make a new folder in the storage drive. Rename the folder to match the project name, such as “Holiday Event.”
- 5** - Inside the above folder, create a child folder. Rename that folder to match the label on the memory card, in this example: “091231-CAM1-1”.
- 6** - Copy all data including the hidden folders/files from the memory card to the child folder.
- 7** - Repeat the above for all subsequent cards (omit Step 4), providing unique label/folder names for each memory card. For example, the second card from the same camera could be labeled “091231-CAM1-2”.

***NOTE: The same procedure should be followed when using the HXR-FMU128***

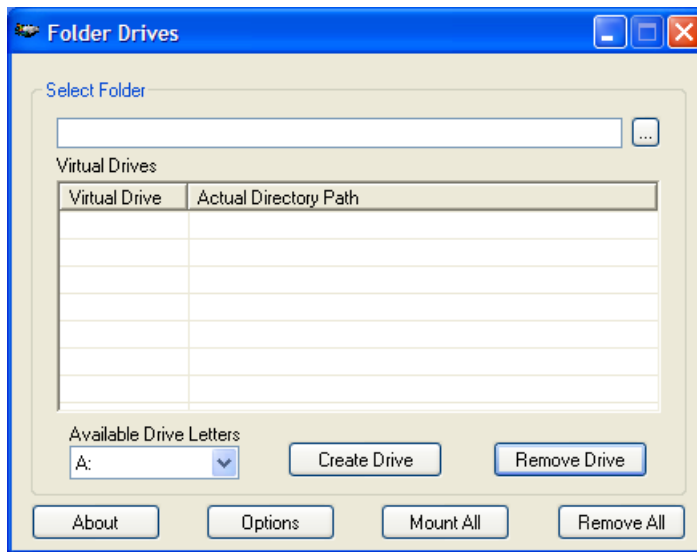
## Importing Clips From Archived Folders

Archived card images must be mounted as virtual external drives by the CMU prior to the import of clips to the NLE.

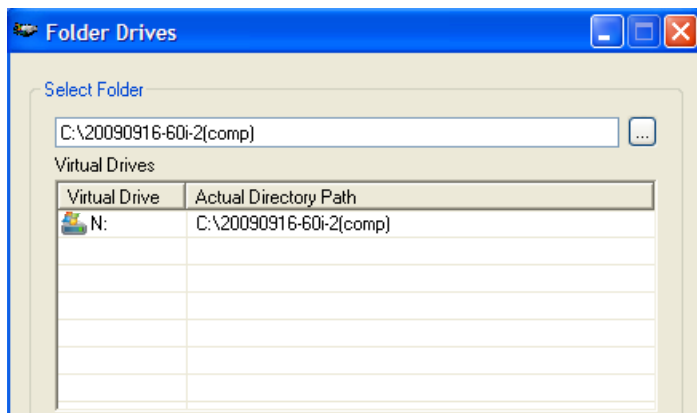
Importing clips from a full-card archive on hard disc involves first mounting the card image as a virtual external drives. This requires the installation of the freeware application “**Folder Drives**”, available as a free download from <http://camtech2000.net>.

To assign a Windows drive letter to a folder on your hard disc:

- 1 - Double click on the **Folder Drives** Desktop icon. The window below will open.

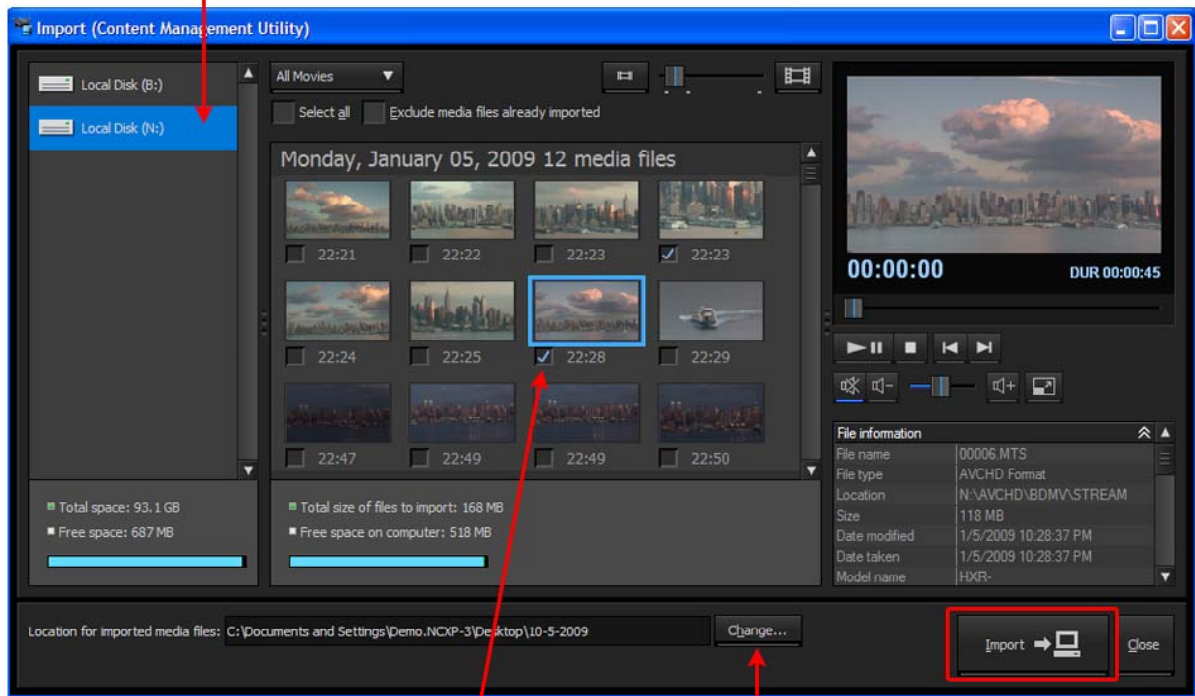


- 2 - In the **Select Folder** field, navigate to the folder containing the media.
- 3 - In the **Available Drive Letters** field, choose a Drive Letter from the list presented.
- 4 - Click **Create Drive**. The folder will be added to the Virtual Drive list, as below:



- 5 - In the CMU, click the Import Media Files button. The virtually mounted folders will appear as external drives in the CMU importer window.

**New Virtual Volume from "Folder Drives"**



Click in box to select clip for importing

Click to set a location for imported media

- 6 - Select a volume to browse.  
7 - Checkmark the files to be imported.  
8 - Set a location for the imported files.  
9 - Click the Import to PC button.

## KEY WORKFLOW FEATURES IN PREMIERE PRO CS4

### *Supported NXCAM Recording Modes*

The following NXCAM recording modes are supported in Version 4.1 of Adobe Premiere CS4:

- ◆ AVCHD: 1080 50i/60i/24p/25p/30p, 720 50p/60p

### *System Requirements*

- ◆ Microsoft Windows® XP 32-bit SP2 (SP3 recommended) or Windows Vista™ 32-bit or 64-bit (SP1 recommended)
- ◆ USB 2.0 connection
- ◆ Adobe Premiere Pro CS4 application software

*For more details about Adobe Premiere Pro CS4, please visit the Adobe website.*

- ◆ CMU for NXCAM (supplied with HXR-NX5E and HXR-FMU128)
- ◆ NXCAM compatible memory cards
- ◆ HXR-FMU128 (optional)

### *Connections*

- ◆ When using memory cards, connect a generic USB 2.0 memory card reader to your computer. The file transfer speed may vary based on the card reader's specifications and connection method. A direct connection (not through a USB hub) is recommended.
- ◆ When using the Sony HXR-FMU128, connect via a USB 2.0 compatible cable. As with the memory card reader, a direct connection to the computer is recommended.

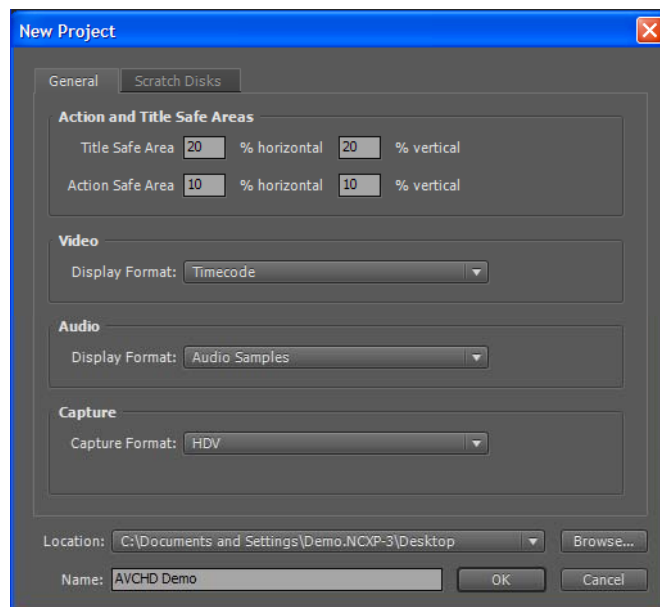


## Creating a Premiere Pro Project

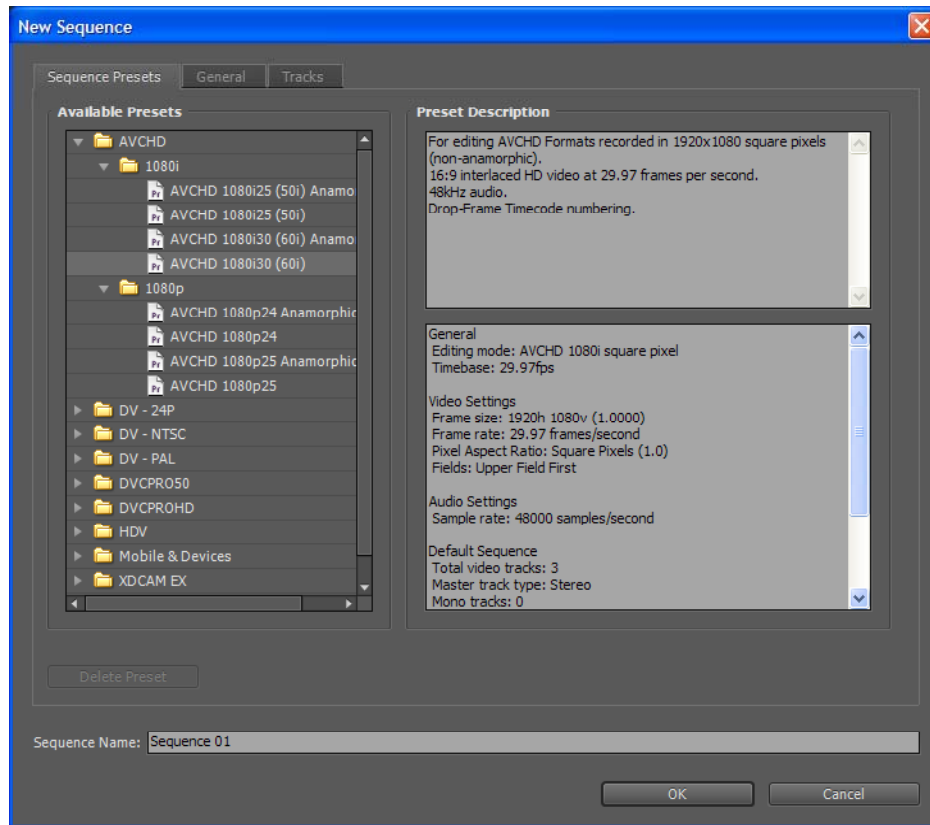
- 1 - Launch the Adobe Premiere Pro CS4 application.
- 2 - When the Welcome Screen appears, do one of the following:
  - ◆ Select an existing project from the **Recent Projects** list.
  - ◆ Create a new project by selecting **New Project**.



- 3 - For a new project, specify the project name, settings, and Scratch Disk, then click **OK**.



- 4 - In the **New Sequence** window, open the AVCHD preset folder and choose a preset that closely matches the majority of your material:



If necessary, existing presets may be customized by selecting the **General** tab.

- 5 - Click **OK**.

**NOTE:** For NXCAM media recorded in either HQ or LP mode (1440x1080), always choose an “Anamorphic” preset.

**For NXCAM media recorded in standard definition, choose a “DV” preset.**

## ***Importing NXCAM Media Files***

Prior to importing media files into a Premiere Pro CS4 project, use the CMU application to transfer the media to the local hard drive(s). The import to the Premiere project may then be accomplished in one of the following ways:

### ***Import Menu***

Do one of the following:

- ◆ Press **CTRL + I**.
- ◆ Right-click in a Bin and select **Import**.
- ◆ Select **File > Import**.

Navigate to the folder where the transferred files are stored, and do one of the following:

- ◆ To import all media, select **Import Folder**. Premiere may return an error message about unsupported files. Click **OK**.
- ◆ Selectively import files by highlighting specific clips and clicking **Open**.

***NOTE: Thumbnail View is not supported for MTS (or m2ts) files in Windows XP/Vista.***

### ***Media Browser***

Adobe Premiere Pro CS4 employs a special import module for direct editing of NXCAM media from either memory cards or the HXR-FMU128 without using the CMU application.

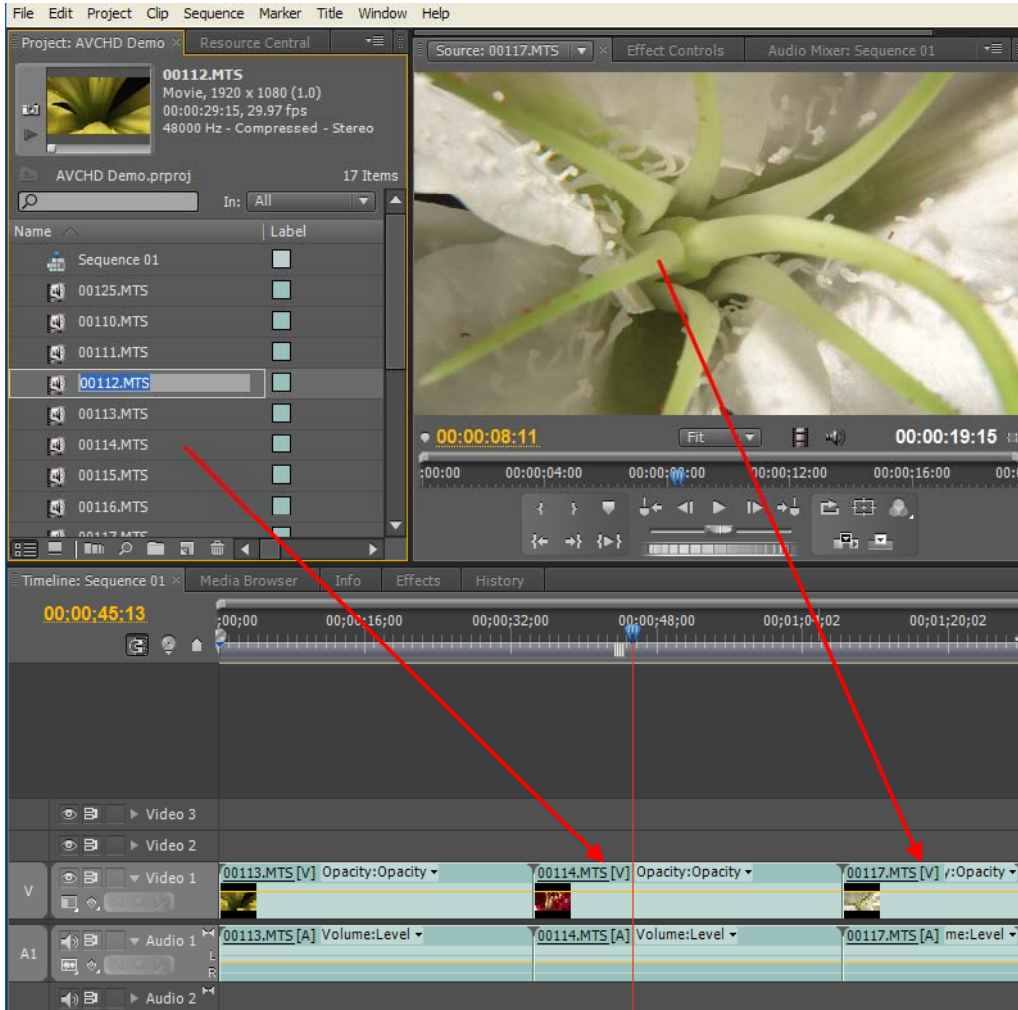
***IMPORTANT: Although the workflow detailed in this section is faster than one where clips are first copied to local storage via the CMU, the Special Import Module does not merge spanned clips, and these files may not function correctly in the timeline.***

***If a memory card or HXR-FMU128 contains spanned clips, the CMU application should be utilised to transfer the files to local drive(s), followed by the Premiere “File > Import” workflow (as described in the previous section).***

- 1** - Select the “Media Browser” tab. Normally, this is shown in the bottom left pane of the normal window layout.
- 2** - Choose the NXCAM media volume containing the AVCHD clips. Choose “AVCHD” in the “View as” drop down list.
- 3** - Double-click on a clip in the Media Browser to load it into the Premiere Source window.
- 4** - Drag the clip(s) from the Media Browser to a Bin.

## Adding Clips to the Timeline

There are a variety of methods available to manipulate and add clips to the Timeline. For example, to add a clip to a Timeline without trimming, simply drag the clip from the Bin or Source Window to the Timeline.



To trim a clip prior to adding it to the Sequence, do one of the following to open it in the Premiere Source window:

- ◆ Double-click on the clip icon in a Bin or Media Browser.
- ◆ Drag the clip from a Bin to the Premiere Source Window.

Navigate the clip in the Source Window, set In and Out points, then drag the image in the Source Window to a location in the Timeline.

***For more detailed information, please consult the Premiere Pro CS4 Operations Guide***

## PROJECT OUTPUT

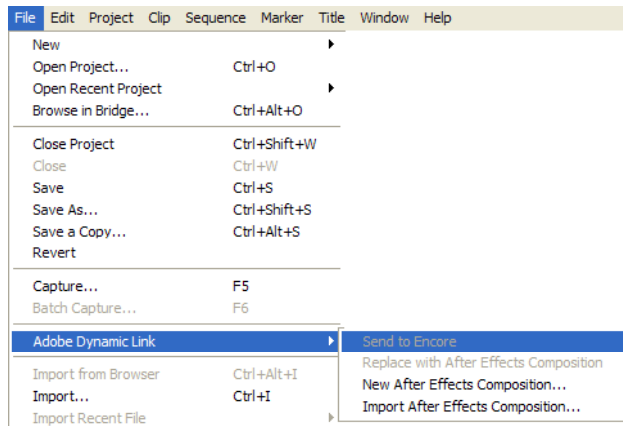
A project may be output in a variety of ways.

- ◆ To Blu-ray Disc™
- ◆ To a high quality movie file
- ◆ To an HDV video tape
- ◆ To an HD recorder via HD-SDI

A general overview of the output process for each of the above follows on the next few pages. For more detailed information, please refer to the Premiere CS4 Operations Guide and/or the Operations Guide for the specific output device or interface.

## Blu-ray Disc

- 1 - Select **File > Adobe Dynamic Link > Send to Encore**.



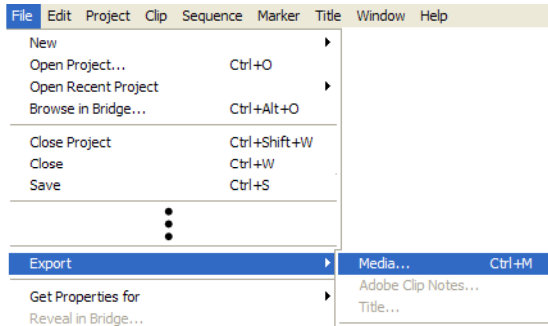
- 2 - Adobe Encore CS4 will launch, and the New Project setting window will appear.
- 3 - Choose “Blu-ray” as the Authoring mode.
- 4 - Choose settings appropriate for the particular project, and provide a project name.
- 5 - Click **OK**.
- 6 - Perform the authoring work. Make sure to select “Blu-ray” in the **Build** tab at the top of the screen.
- 7 - Insert a blank BD-R/BD-RE disc and burn.

***For more detailed information, please consult the Encore CS4 Operations Guide***

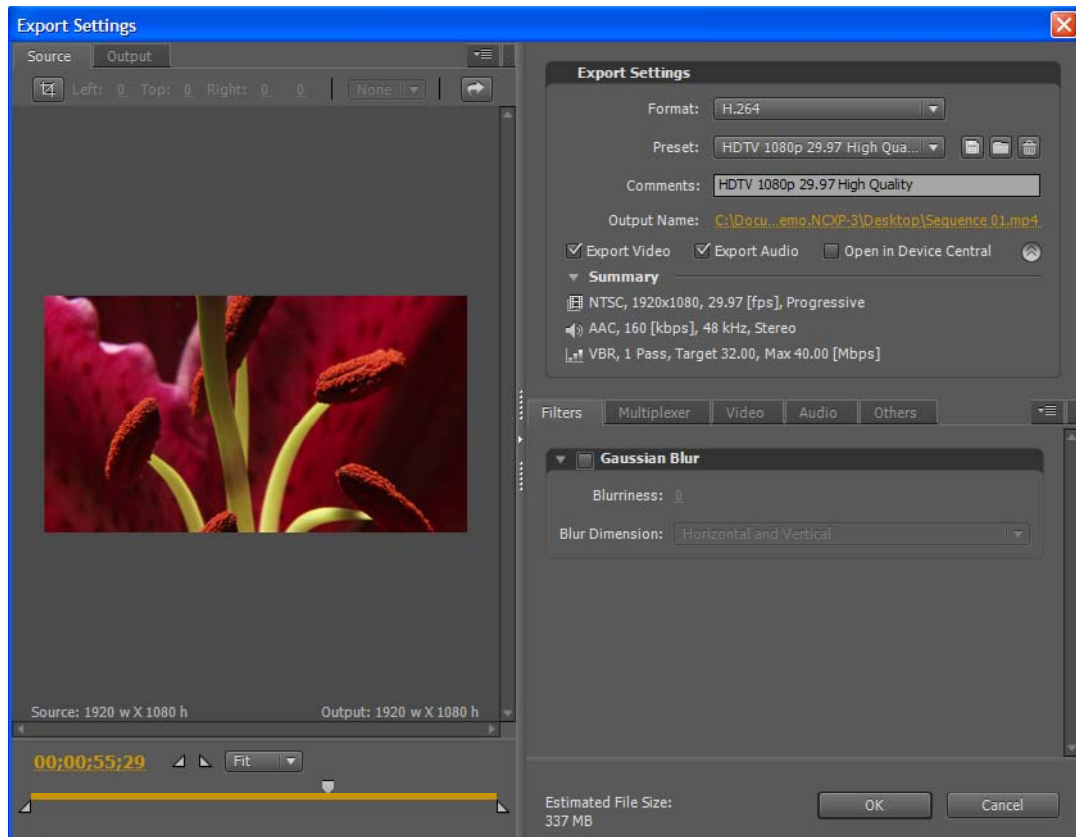
## High Quality Movie File

Adobe Premiere CS4 supports the creation of movie files in a variety of formats, including MXF, QuickTime®, Windows Media Video™, and MP4 for PSP® / iPod®.

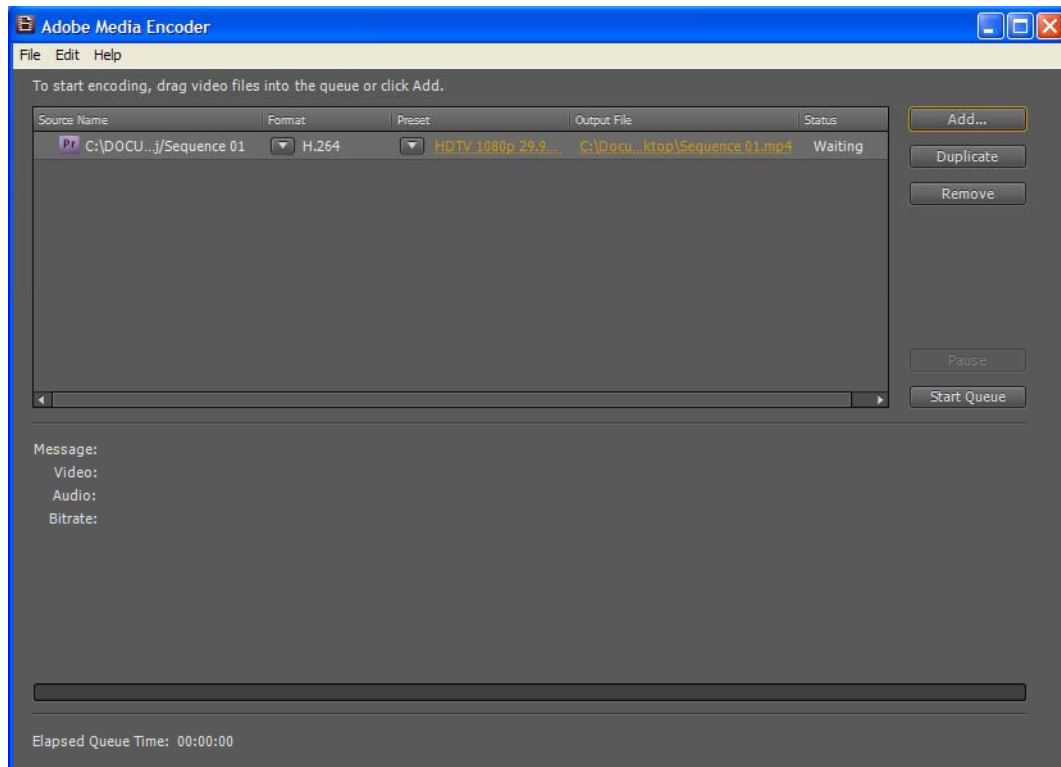
- 1 - Select **File > Export > Media**.



- 2 - Select a format and preset suitable for the project. A custom preset may also be created and saved at this time.



**3** - Click **OK**. The Adobe Media Encoder will launch.

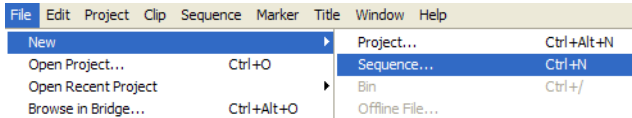


**4** - Click the **Start Queue** button.

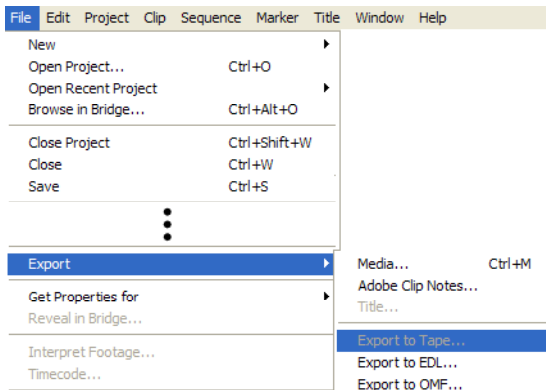


## HDV Video Tape

- 1 - Connect an HDV deck to the computer with an i.LINK® cable.
- 2 - Create a new sequence in the current project by selecting **File > New > Sequence** or pressing **Ctrl + N**. When the Sequence Settings window appears, choose an HDV preset that closely matches the AVCHD sequence.



- 3 - Open the HDV Sequence in the Timeline.
- 4 - Drag the AVCHD sequence to the HDV Timeline.
- 5 - Select **File > Export > Export to Tape**.



- 6 - Click **Render and Record**.

### ***Output to an HD Recorder via HD-SDI***

Adobe Premiere Pro CS4 is compatible with several series of HD-SDI card interface cards, supporting high quality output of the project timeline to an HD deck, such as XDCAM® HD, HDCAM® etc.

The procedures for output vary with the specific interface product installed. Please refer to the operations guides of the specific interface product and/or the Adobe Premiere CS4 Operations Guide for detailed setup and operational procedures.

## NOTES

© 2009 Sony Electronics Inc. All rights reserved. Reproduction in whole or in part without written permission is prohibited. Sony, NXCAM, DVCAM, XDCAM, HDCAM, Memory Stick PRO Duo, Memory Stick PRO Duo HG and i.LINK are trademarks of Sony. PSP is a trademark of Sony Computer Entertainment. HDV and the HDV logo are trademarks of Sony Corporation and the Victor Company of Japan. CompactFlash is a trademark of the CompactFlash Association. Adobe Premiere CS4 is a trademark of Adobe Corporation. .Blu-ray Disc is a trademark of the Blu-ray Disc Association. Windows Explorer, Windows XP and Windows Vista are trademarks of Microsoft Corporation. Macintosh and iPOD are trademarks of Apple Corporation.